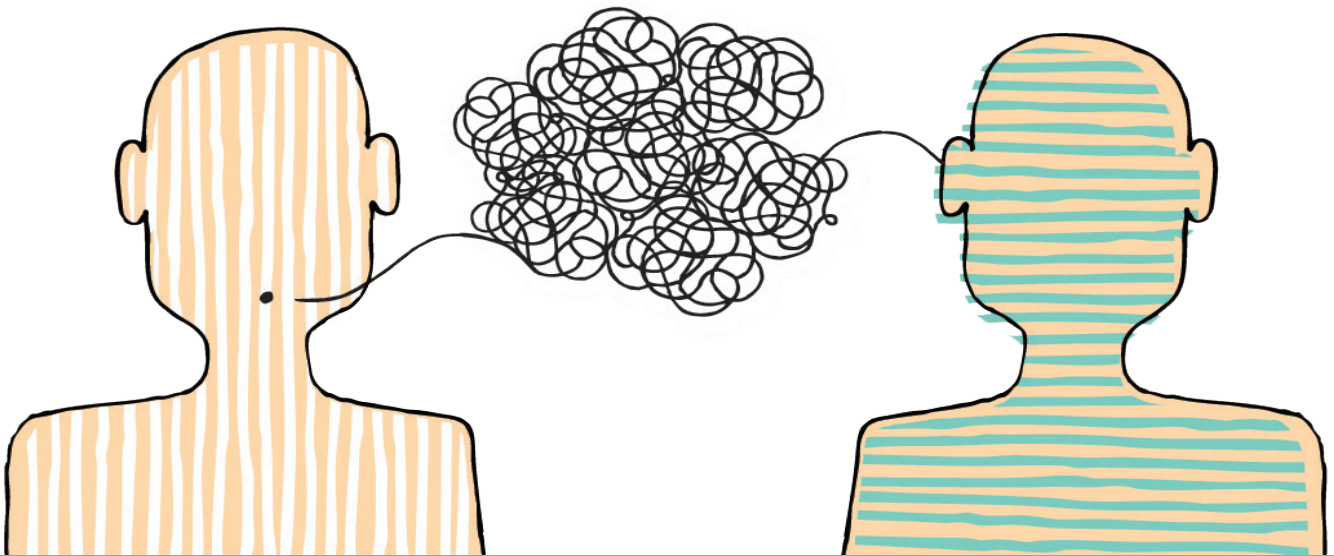




... YOU KNOW? ...

HEARING AIDS ARE NOT ONE-SIZE-FITS-ALL.



Different hearing aids work for different people and can be extremely personal to you. The best way to choose a hearing aid or assistive listening device is to have a registered audiologist complete an assessment to choose the right type of aid for your needs. This is important to ensure you have the best hearing possible.

For more information, or to find an audiologist near you, visit www.bcaslpa.ca