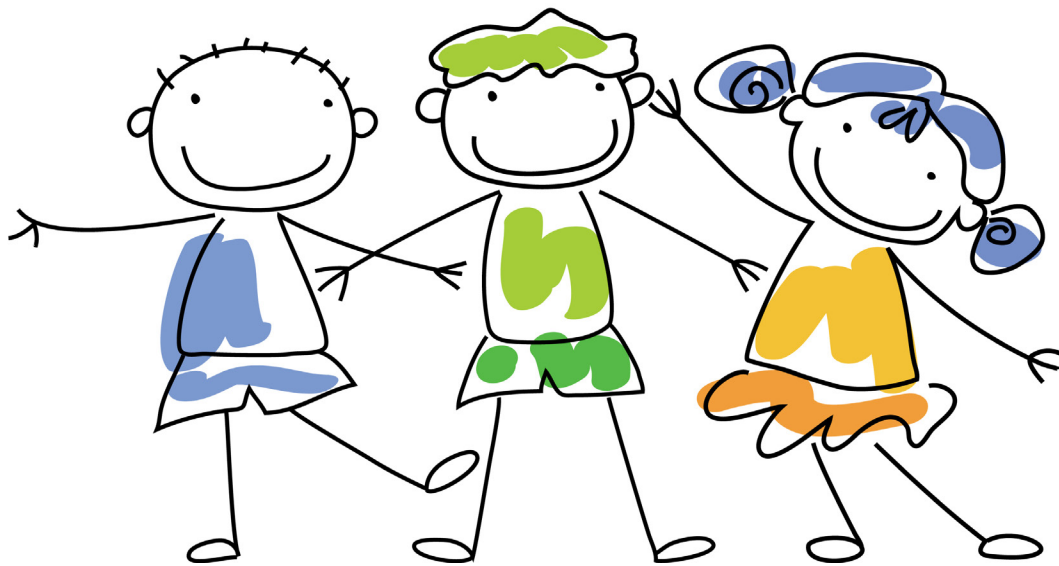




... YOU KNOW? ...

SPEECH-LANGUAGE PATHOLOGISTS

Can identify children who are at-risk to be slow or delayed when learning to read **before** they start?



One of the most important skills a child must have before learning to read is an ability to understand spoken language or listening comprehension. Speech-language pathologists can assess and help treat children who have difficulty with this pre-literacy skill.

For more information, or to find a speech-language pathologist near you, visit www.bcaslpa.ca