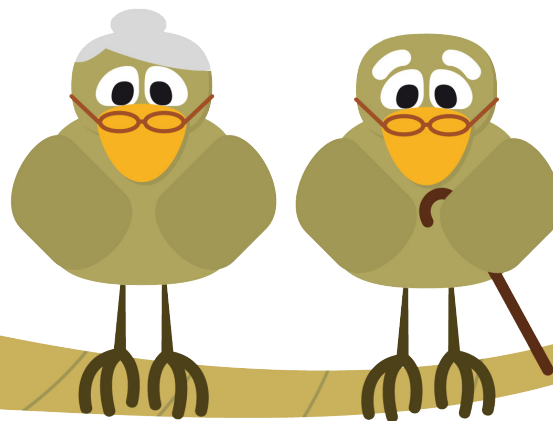




... YOU KNOW? ...

6 TO 12% OF SENIORS

Experience speech, language or swallowing problems.



Speech-language pathologists (SLPs) can provide assessment, treatment and follow-up for difficulties with speaking, understanding, thinking, memory, and swallowing, that can occur as we age.

For more information, or to find a speech-language pathologist near you, visit www.bcaslpa.ca

